



www.ra-se.com



MIRA product info



TABLE OF CONTENT

1. CHARACTERISTICS AND BREEDING SCHEME	3
2. EASY2MANAGE	4
3. NUCLEUS RESULTS* LINE 12 AND LINE 36 AND POTENTIAL MIRA	5
4. GRANDPARENT (GP), GREAT-GRANDPARENT (GPP) AND PURE LINE ANIMALS	6



1. CHARACTERISTICS AND BREEDING SCHEME

MIRA is an efficient, easy-to-manage white female.

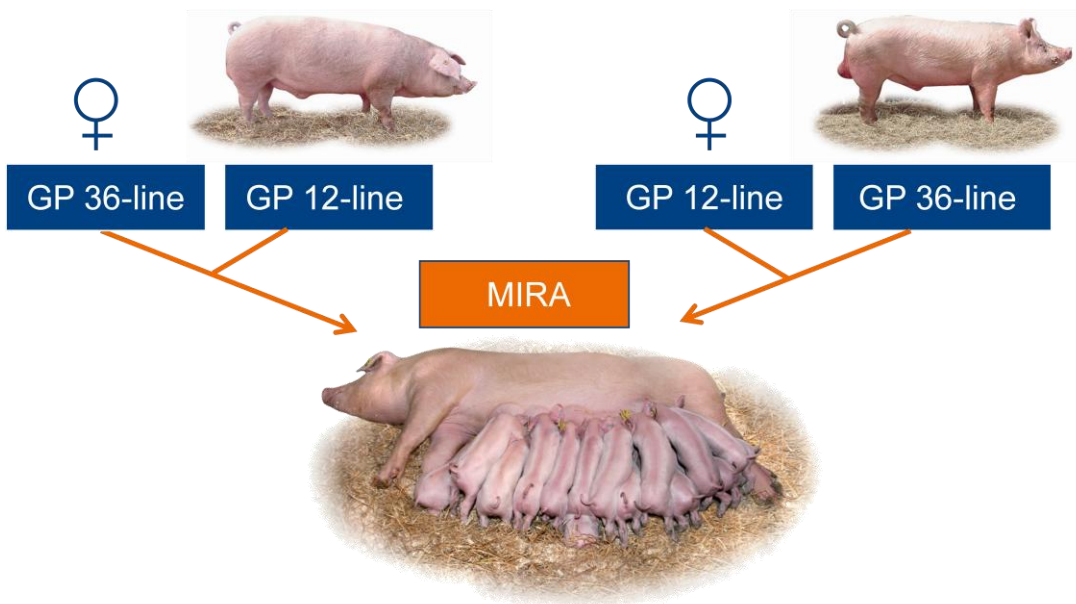
Producers can operate a closed herd policy through the RA-SE Genetics GENmatch® programme.

MIRA distinguishes itself by:

- Extra productivity
- High number of weaned pigs
- Feed efficient
- High milking capacity
- Strong legs
- Excellent longevity
- Strong heat symptoms
- Outstanding mothering ability
- High feed intake
- Vigorous pigs with uniform weaning weights, lean growth and excellent carcass quality
- **EASY2MANAGE**



MIRA is the result of a cross between the Large White 36 and Landrace 12 purebred lines. The breeding scheme is reciprocal: a 36 line boar can be crossed with a 12 line sow or a 12 line sow can be crossed with a 36 line boar. Both schemes resulting in a highly productive MIRA parent sow.



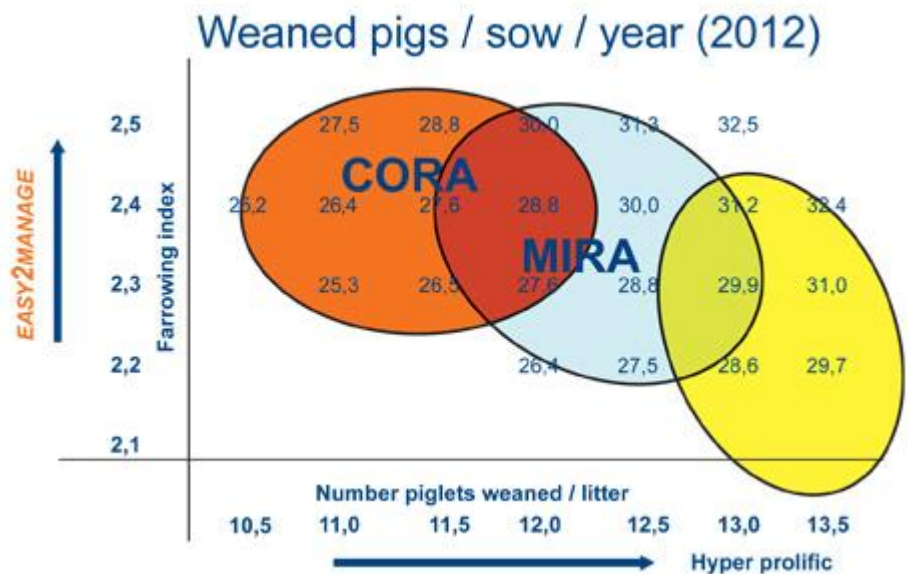


2. EASY2MANAGE

With the **EASY2MANAGE** ability of both CORA and MIRA, the highest farrowing indices can be obtained. Moreover, the offspring is uniform and vigorous. Piglets achieve a higher weaning weight which result in a reduced lifetime mortality. The uniformity of the growing pigs leads to higher average slaughter value.

Graph 1

Comparison of CORA, MIRA and hyper prolific breeds show the capacity of CORA and MIRA to produce more litters per year. CORA and MIRA have strong legs and a good appetite for high feed intake during lactation period. Despite hyper prolific lines might produce bigger litters at birth, total number of weaned and produced pigs per sow per year is similar.

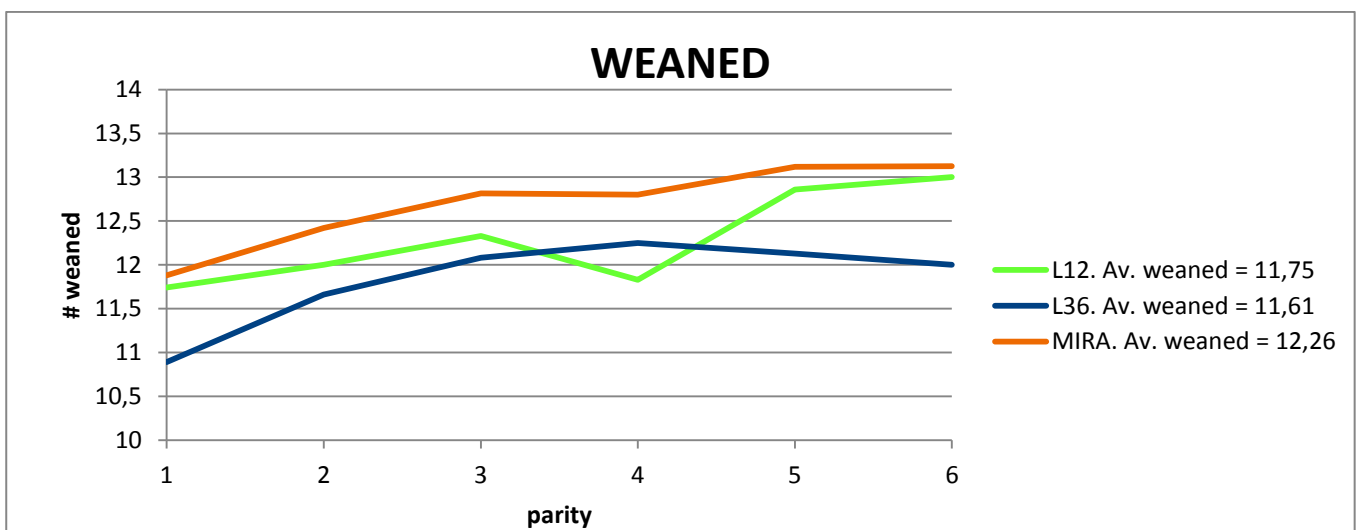
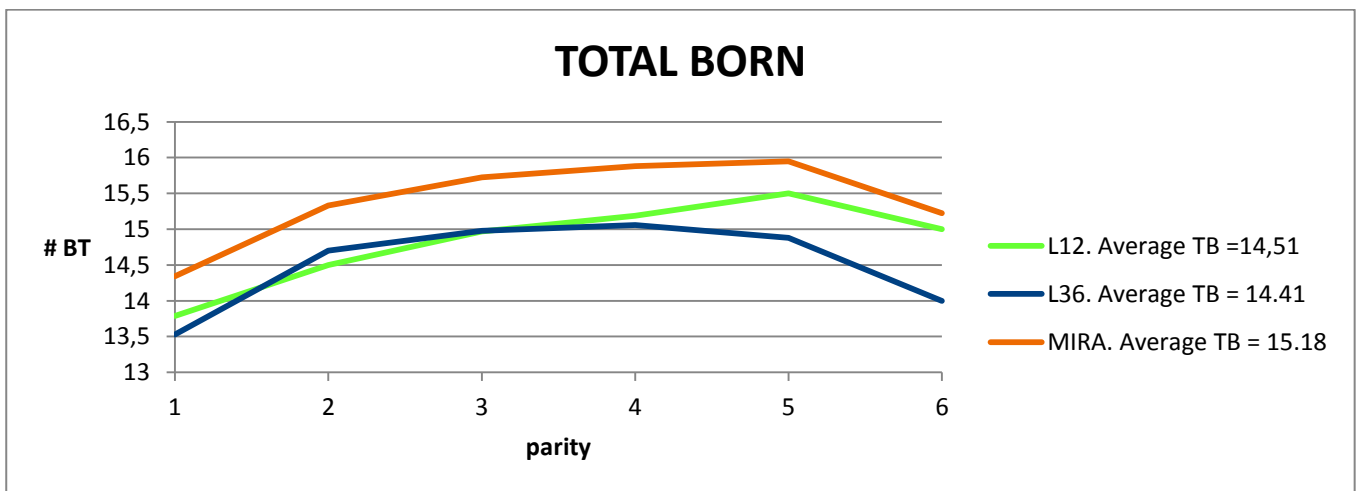
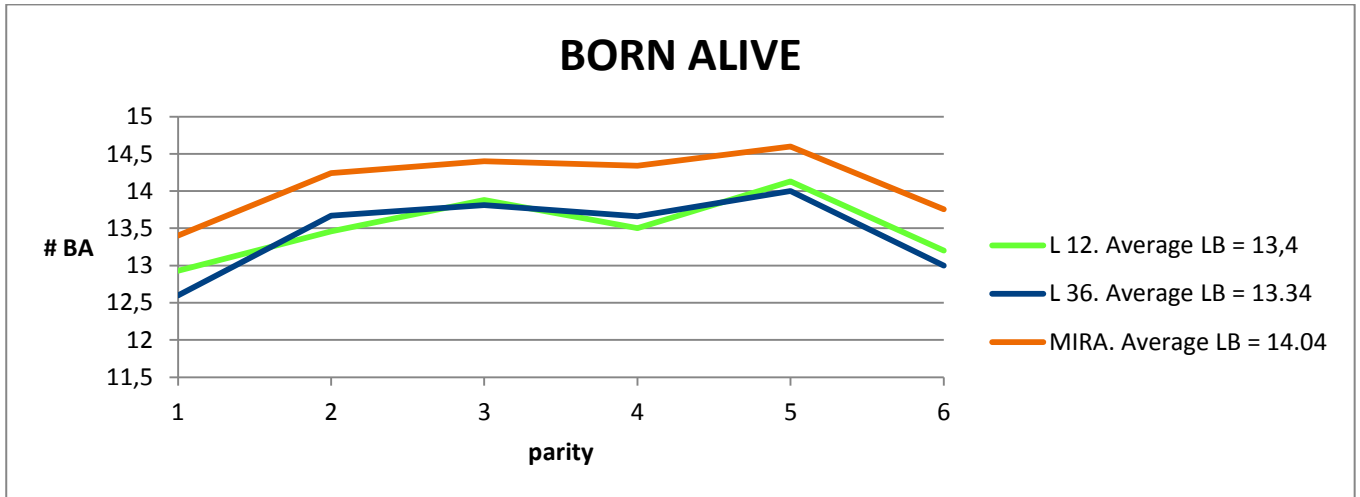


Graph 2

CORA and MIRA have mothering abilities to wean and produce better pigs due to lower mortality rates and higher birth weights. With average higher litter weights producers have better survival rates throughout the growing period.



3. NUCLEUS RESULTS* LINE 12 AND LINE 36 AND POTENTIAL MIRA



(* based on RA-SE nucleus results of 2012)



4. GRANDPARENT (GP), GREAT-GRANDPARENT (GGP) AND PURE LINE ANIMALS

RA-SE Genetics is specialised in the development and production of GP and GGP gilts. Provided the GENmatch[®] programme is applied, pig farmers can produce CORA or MIRA gilts on farm. When using GGP stock, partners can breed their own GP and Parent animals to reduce transport costs. The GENmatch program enables partners to run their own GGP program with the introduction of semen from SPF AI stations.